

## Hose replacement guidelines for Lincoln Automatic Lubrication systems on mobile equipment

The systems we install are usually of one of two system types, to identify the type and size hose you need for your system first identify the type of lubrication system and follow the hose guidelines for that system type.

The two system types are Centromatic and Quicklube each are described below with hose replacement guidelines.

### Centromatic

This system uses injectors and usually has a pump that pumps out of a steel canister of grease keg that holds at least 60 pounds of



grease.

These are injectors, if you have these on your equipment yours is a Centromatic system.

Centromatic hose replacement guidelines:

There are two possible grease hose types that we install on the Centromatic system.

The **supply hoses** run from the pump to the manifold connection on the injector blocks, and is the hose used to connect from injector manifold to injector manifold. This is normally a 3/8" high pressure thermoplastic hose with female JIC fittings. Call us with the length of hose you need and we will quote you a price and make and ship the hose to you.

The **feedline hoses** run from the injector output points on the front of the injectors to the bearings or points receiving grease. These hoses are usually 1/4" thermoplastic hoses with female JIC fittings. Call us with the length of hose you need and we will quote you a price and make and ship the hose to you.

## Quicklube

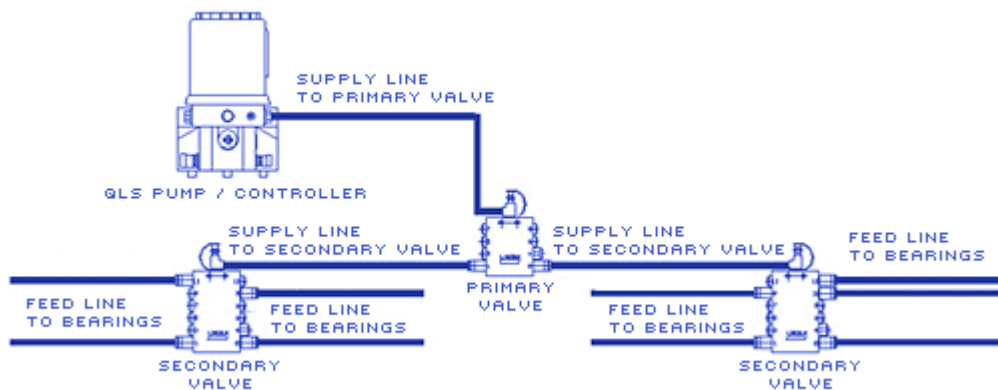
This system uses divider valves and usually has an electrically operated pump with a clear plastic grease reservoir.



This is a Quicklube pump if your system has a pump similar to this it is a Quicklube system.

Quicklube hose replacement guidelines:

The the **supplyline hoses** are hoses that run from the pump to the first divider valve, also called the primary or master divider valve and from that valve to the subdivider valves are normally on our installations made with 1/4" thermoplastic hose with female JIC fittings. These hoses are identified in the drawing below as supply lines.



The **feedline hoses** on a Quicklube system are the hoses that run

from the outlet points on the divider valves to the bearings or points being lubricated. These hoses are usually a 1/8" ID thermoplastic hose prefilled with grease and they use a reusable hose fitting. There are a couple of different end types on these hoses, either a push to connect type that can use either a model [274239](#) straight end fitting or a model [272394](#) 90 degree end fitting or a model [246002](#) reusable hose fitting with 1/8" male pipe threads. Click on the model numbers to be taken to the appropriate page on our website.